

# SENTRY RC-100 RESIN COLUMN

## Cation Exchange Resin Columns

### SAMPLE CONDITIONING

The Sentry® RC-100 refillable ion exchange resin column make resin replacement easy and economical, minimizing channeling and achieving a higher resin efficiency than competitive columns with inefficient column diameters.

#### MODELS

RC-100

RC-101

#### BENEFITS

The RC-100 is specially designed to minimize the column's dead volume, assuring highly representative sampling. After a chemical upset, the RC-100 can produce a representative sample within four minutes (at a flow rate of 200 cc/min) while others can take as long as 16 minutes.

In addition to reducing dead volume, the RC-100 refillable ion exchange column's design also produces better flow distribution. Poor flow distribution and velocity can skew cation conductivity results by up to 0.1  $\mu\text{S}/\text{cm}$ .

The RC-101 uses the same design, but is made of PETG which is resistant to high levels of residual ammonia present in the sample or in the atmosphere near the column.

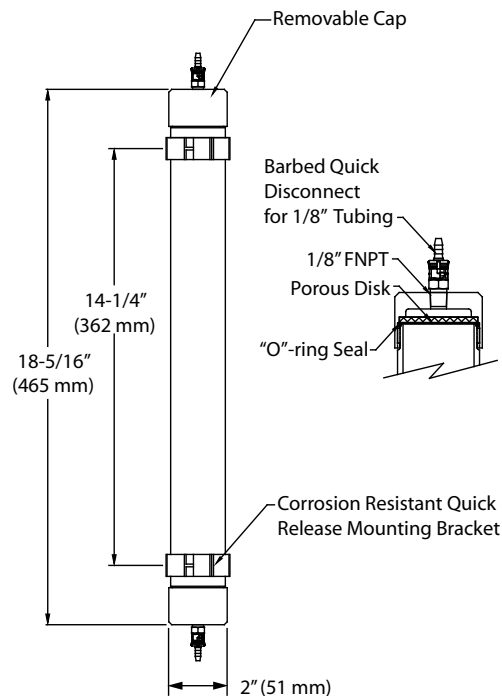
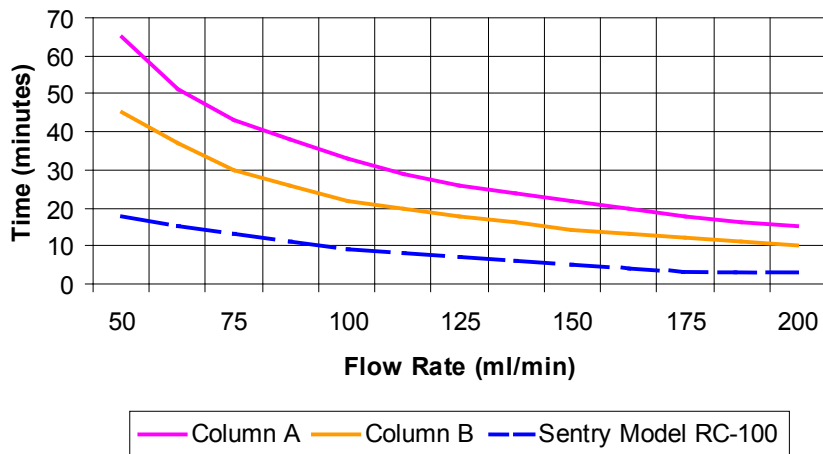
#### FEATURES

- Refillable, clear plastic column makes resin replacement economical and easy
- PETG columns available for applications where chemical attack may occur
- Provides optimum fluid velocity with increased resin efficiency
- Designed especially for flow rates common to water chemistry analyzers
- Minimizes lag time required to detect chemical upset
- No PVC used; wetted materials will not leach chlorides or plasticizers
- End fittings are 1/8-inch quick disconnects



Sample. Monitor. Measure.  
**SENTRY**  
Any Application. Anywhere.

**Time Response vs. Flow rate**



**SPECIFICATIONS**

operating temperature	180°F (82°C) maximum
operating pressure	100 psig at 100°F (7 barg at 38°C); 60 psig at 180°F (4 barg at 82°C)
cation capacity	800 grains as CaCO <sub>3</sub>
resin volume	0.020 ft <sup>3</sup> (565 cc)
flow	200 cc/min recommended; 500 cc/min maximum
resin	cation resin with color-indicating dye
weight	column + resin: 2.4 lb (1.1 kg)
wetted materials	RC-100: polycarbonate, polypropylene, acetal RC-101: PETG, polypropylene, acetal

**PART NUMBERS**

RC-100 resin column with initial change of resin, mounting brackets, and two sets of quick disconnects	7-00816B
RC-101 resin column with initial change of resin, mounting brackets, and two sets of quick disconnects	7-00816N
cation resin refill bag	2-03972A
corrosion-proof quick disconnect mounting bracket	4--04869A
porous disk	2-03892A
O-ring seal	4-04820C
acetal barbed quick disconnects (includes two each male and female coupling)	6-02503B

stainless steel fittings available on request

[sentry-equip.com](http://sentry-equip.com)

966 Blue Ribbon Circle North, Oconomowoc, WI 53066 U.S.A. | +1-262-567-7256 | [sales@sentry-equip.com](mailto:sales@sentry-equip.com)



© 2020 Sentry Equipment Corp. All rights reserved. All product and company names are property of their respective owners. It is solely the responsibility of end users, through their own testing and analysis, to select products and materials suitable for their specific application requirements, ensure they are properly installed, safely applied and properly maintained, and to limit their use to their intended purpose. Improper selection, installation or use may result in personal injury or property damage.

S-SW-SPS-00142-13 05-20

COMPANY WITH  
QUALITY SYSTEM  
CERTIFIED BY DNV GL  
= ISO 9001 =